

PALLET RACK & WIRE DECK *Systems*



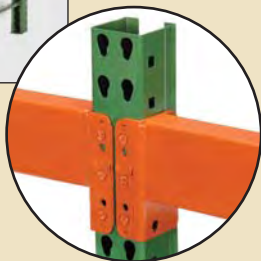
Full Product Line of Pallet Rack & Wire Deck Systems

Wireway Husky is the only RMI certified company to manufacture rack and wire deck together. Wireway Husky also provides technical and engineering support across an extensive product line that uses numerous punch styles and sizes to meet customer needs. As the originator and leader of the Guaranteed 48-Hour Quick Ship program, our customers have come to expect unparalleled service with quality product as standard.



INVINCIBLE® RACK

The Wireway Husky line of Invincible pallet rack features brands synonymous with quality in the pallet rack industry for more than 45 years. Upright frames are available in both 3" x 1-5/8" and 3" x 3" posts with heights up to 46 Ft. The teardrop pattern is an industry standard and accepts most teardrop style beams. Beams feature the patented Bowlock® safety clip. Bowlock® cannot be sprung or removed without first removing the load and requires no special tools. Standard colors are green upright frames with orange beams. Call for other color options.



INVINCIBLE® RACK
Most common in the rack industry. Two teardrop punches side by side on 2" centers. Beams adjustable every 2". Compatible with most other manufacturers' teardrop patterns.

3" x 1-5/8"



3" x 1-5/8" Posts available in:
14 gauge

3" x 3"



3" x 3" Posts available in:
14 gauge
13 gauge
12 gauge
11 gauge



LYNX RACK®

Features a Double Slotted Post. 3 inch centers provide quick, easy vertical adjustment of beams. Lynx punch features two angled slots. Beams adjustable every 3". Compatible with similar designs of double slotted rack. Integral safety catch automatically locks into place when beam is properly seated. Standard colors are gray upright frames with yellow beams. Call for other color options.



LYNX RACK®
Features two angled slots on 3" centers. Compatible with similar designs of double slotted rack.

Available 3" x 1-5/8" and 3" x 3"



3" x 1-5/8" Posts available in:
14 gauge



3" x 3" Posts available in:
14 gauge
13 gauge
12 gauge
11 gauge } Subject to order quantity

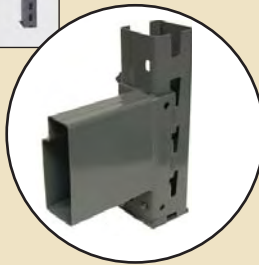


RELIABLE® RACK

The Wireway Husky line of Reliable pallet rack features brands synonymous with quality in the pallet rack industry for more than 45 years. Upright frames are available in 3" x 3" posts with heights up to 46 Ft. The keystone pattern is an industry standard and accepts most keystone style beams. Standard colors are gray upright frames with gray beams. Call for other color options.

RELIABLE® RACK

Features a single keystone hole in the center of the upright face on a 3" centerline. Beams adjustable every 3". Beams from both sides share the same hole. Compatible with similar designs of keystone rack.



3" x 3"



3" x 3" Posts available in:

- 14 gauge
 - 13 gauge
 - 12 gauge
 - 11 gauge
- } Subject to order quantity

Systems From Wireway Husky

From small to large, Wireway Husky is ready and experienced to provide design assistance and manufacture for all your rack system needs. From catwalks to rack supported mezzanines to full pick modules, we have the products and capabilities to successfully construct your project. Services include assistance with structural design, application efficiency, seismic compliance and permitting.



Custom Colors Available on All Products

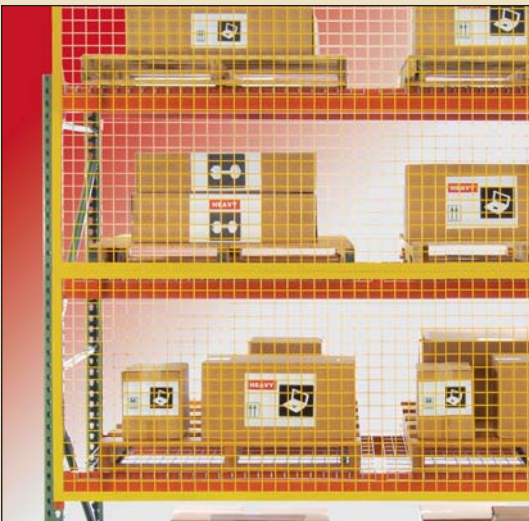




WIRE DECK



Wireway Husky is the only pallet rack manufacturer to produce its own wire deck. This means you get a wire deck engineered to fit right and meet the performance demands of professional material handlers. Wireway Husky's wire deck is the solution for both new and existing pallet rack systems. Numerous designs are available for a variety of capacity and application needs covering all aspects of both manufacturing and distribution. Installs quickly with no tools and is an excellent choice for facilities with sprinkler systems. Meets all fire and safety regulations.



RACK GUARD

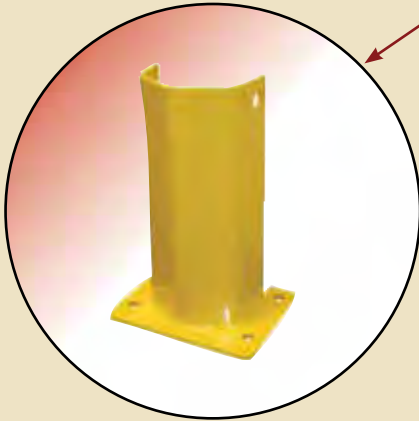
Prevent Materials from Falling into Aisles!

Rack Guard is the economical answer to rack safety and the increasing demands of regulatory agencies.

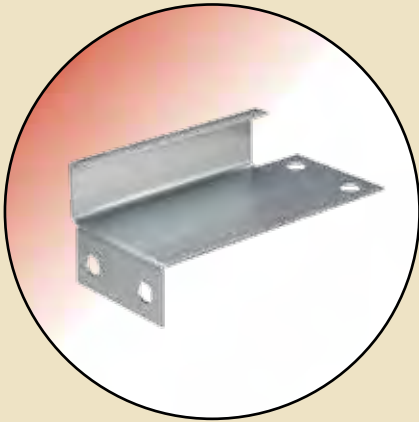
Our panels attach to pallet rack systems using spacer clips. 8-gauge, 2" x 2" square welded steel wire mesh welded to a steel angle frame encloses the rack while still providing inventory visibility. Yellow Finish.

Accessories

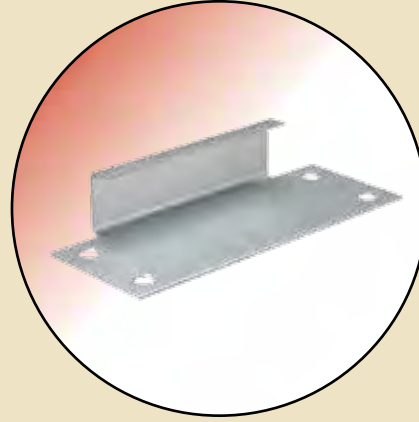
Floor Mount or Bolt-On



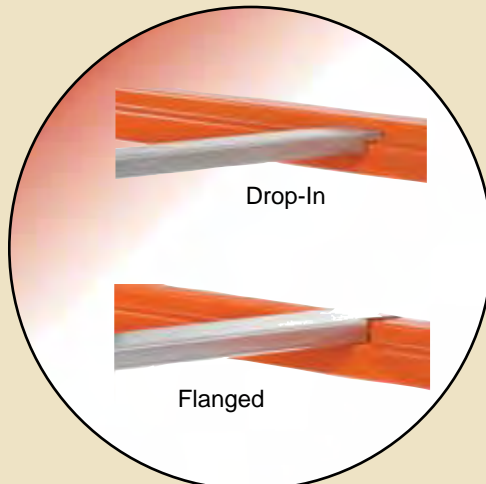
Post Protectors
Protects base of upright frames from lift trucks to minimize



Wall Ties
Secures upright frames to walls for added strength and to help prevent overturning.



Row Spacers
Ties rows of rack together for proper alignment and added strength.



Crossbars
Spans gap between beams to help prevent pallets from falling through.



Fork Entry Bars



Drum Cradle

**“From Order to Out the Door” 48-Hours or Less,
GUARANTEED ... or we pay the freight!**



**48-Hour Quick Ship
 applies to selected
 stock sizes for
 Wireway Husky Products**



PALLET RACK

UPRIGHT FRAMES				BEAMS					WIRE DECKS			
14Ga., 3" X 1-5/8" POST				Profile	Length	Capacity	Weight	Model #	D x W	Capacity	Weight	Model #
D x H	Capacity	Weight	Model #									
36" x 96"	*19380	39.62	IU18360096	4.0"	48"	7849	12.19	IBX39048	36" x 46"	3250	18.58	3646A3
36" x 144"	*19380	56.21	IU18360144	4.0"	96"	4048	22.39	IBX39096	36" x 52"	3250	20.09	3652A3
42" x 96"	*19380	41.31	IU18420096	4.5"	96"	5010	23.66	IBX43096	36" x 58"	3900	23.83	3658A4
42" x 120"	*19380	53.15	IU18420120	5.0"	96"	6054	25.51	IBX48096	42" x 46"	2610	21.40	4246A3
42" x 144"	*19380	60.60	IU18420144	5.0"	108"	5373	28.45	IBX48108	42" x 52"	2610	23.11	4252A3
42" x 192"	*19380	79.89	IU18420192	5.0"	120"	4412	31.39	IBX48120	42" x 58"	3150	27.48	4258A4
48" x 96"	*19380	43.04	IU18480096	5.0"	144"	3064	37.27	IBX48144	48" x 46"	2100	24.61	4846A3
48" x 120"	*19380	55.79	IU18480120	5.5"	108"	7723	36.07	IBN55108	48" x 52"	2100	26.57	4852A3
48" x 144"	*19380	62.99	IU18480144	5.5"	144"	4901	47.44	IBN55144	48" x 58"	2630	31.61	4858A4
14Ga., 3" x 3" POST				6.0"	144"	7552	59.91	IBH60144				
42" x 144"	*24957	71.52	IU24420144									
42" x 192"	*24957	94.52	IU24420192									
48" x 192"	*24957	97.54	IU24480192									
42" x 240"	*24957	117.51	IU24420240									

*** All upright frame capacities based on 36" beam shelf spacing.
 For all other capacities please refer to price book.**

ACCESSORIES											
CROSSBARS			ROW SPACERS			WALL SPACERS			POST PROTECTORS		
Depth	Weight	Model #	Length	Weight	Model #	Length	Weight	Model #	Height	Weight	Model #
36"	4.37	A1036G	6"	0.87	RSIN06	6"	0.87	WSIN06	12"	11.10	I5712-P
42"	5.13	A1042G	8"	1.10	RSIN08	8"	1.10	WSIN08	18"	15.35	I5718-P
48"	5.88	A1048G	12"	1.55	RSIN12	12"	1.55	WSIN12			

***EXCEPTION TO GUARANTEE**

Exceptions to guarantee include: Delays due to acts of God, strikes, trucking service interruptions, international shipments or multiple truckload orders. All orders are subject to credit department approvals. 48-Hour Quick Ship is based on order being received before 2:00 P.M. Eastern Standard Time. Contact Wireway Husky Corp. or your dealer for more information. Acknowledged QUICK SHIP orders not subject to price changes.



Made in the USA

Item #80114-2

© 2011, Wireway/Husky Corp. All Rights Reserved.

